



RYE PARKSIDE

PECKHAM RYE

RYE-PARKSIDE.CO.UK



RYE PARKSIDE

Schedule of *accommodation*

Block A

Plot	Floor	Beds	Baths	Size sqm	Size sqft	Ext Space
A03	Ground	One	One	65	700	Terrace
A15	First	One	One	51.1	550	Balcony
A25	Second	One	One	51.1	550	Balcony
A35	Third	One	One	51.1	550	Balcony
A45	Fourth	One	One	51.1	550	Balcony
A51	Penthouse	One	One	52	560	Terrace
A52	Penthouse	One	One	44.9	483	Terrace
A53	Penthouse	One	One	52.3	563	Terrace
A54	Penthouse	One	One	52.2	562	Terrace

A11	First	Two	Two	72.1	776	Balcony
A12	First	Two	Two	73	786	Balcony
A13	First	Two	Two	69.1	744	Balcony
A14	First	Two	Two	72.3	778	Balcony
A21	Second	Two	Two	72.1	776	Balcony
A22	Second	Two	Two	73	786	Balcony
A23	Second	Two	Two	69.1	744	Balcony
A24	Second	Two	Two	72.3	778	Balcony
A31	Third	Two	Two	72.1	776	Balcony
A32	Third	Two	Two	73	786	Balcony
A33	Third	Two	Two	69.1	744	Balcony
A34	Third	Two	Two	72.3	778	Balcony
A41	Fourth	Two	Two	72.1	776	Balcony
A42	Fourth	Two	Two	73	786	Balcony
A43	Fourth	Two	Two	69.1	744	Balcony
A44	Fourth	Two	Two	72.3	778	Balcony

A01	Ground	Three	Two	95	1,023	Terrace
A04	Ground	Three	Two	86.7	933	Terrace

Block B

Plot	Floor	Beds	Baths	Size sqm	Size sqft	Ext Space
B05	Ground	One	One	61.1	658	Garden
B06	Ground	One	One	51.2	551	Garden & Balcony
B11	First	One	One	50.1	539	Terrace
B12	First	One	One	50.2	540	Balcony & Terrace
B14	First	One	One	60	646	Balcony
B15	First	One	One	53.7	578	Balcony
B21	Second	One	One	50.1	539	Terrace
B22	Second	One	One	50.2	540	Balcony & Terrace
B24	Second	One	One	60.1	647	Balcony
B25	Second	One	One	53.7	578	Balcony
B32	Third	One	One	50.1	539	Terrace
B33	Third	One	One	50.2	540	Balcony & Terrace
B35	Third	One	One	50.2	540	Terrace
B36	Third	One	One	53.7	578	Balcony
B42	Fourth	One	One	50	538	Balcony
B43	Fourth	One	One	50.2	540	Balcony x2
B45	Fourth	One	One	50.2	540	Balcony
B46	Fourth	One	One	58	624	Balcony

B01	Ground	Two	One	87.6	943	Garden
B03	Ground	Two	Two	83	893	Garden
B13	First	Two	Two	83.9	903	Balcony
B23	Second	Two	Two	83.9	903	Balcony
B34	Second	Two	Two	83.9	903	Balcony
B41	Fourth	Two	Two	74.5	802	Balcony & Terrace
B44	Fourth	Two	Two	83.9	903	Balcony
B51	Penthouse	Two	Two	80.9	871	Terrace

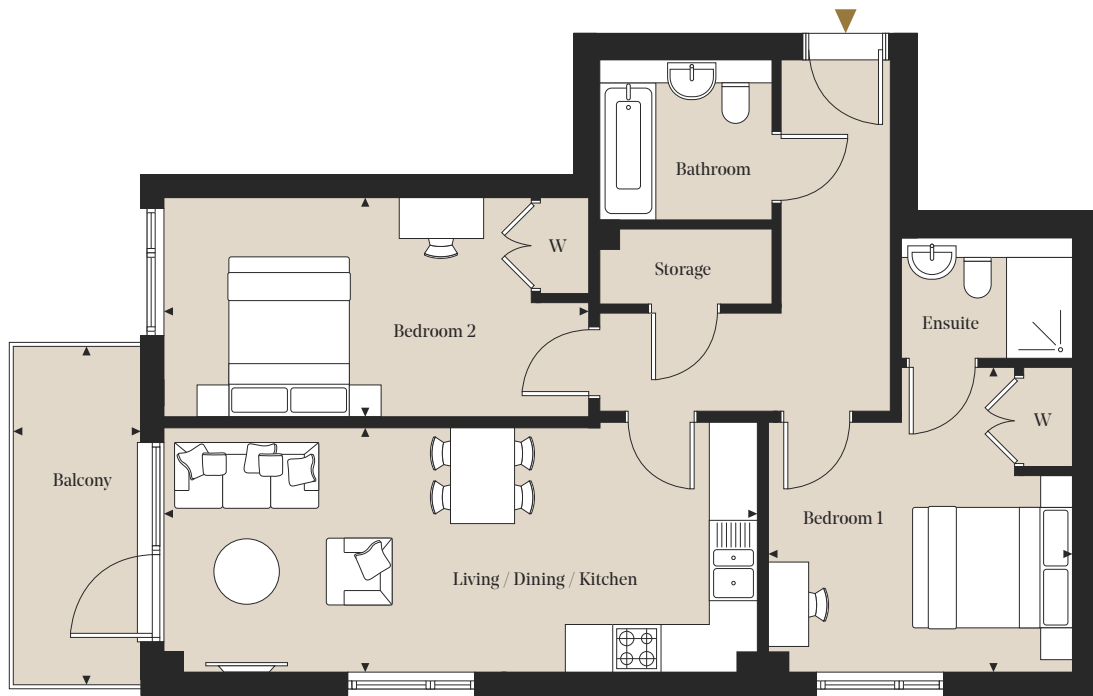
B02	Ground	Three	Two	122.5	1319	Terrace
B16	First	Three	Two	104.6	1126	Terrace
B26	Second	Three	Two	104.6	1126	Terrace
B31	Third	Three	Two	104.6	1126	Terrace
B52	Penthouse	Three	Two	100.3	1080	Terrace
B53	Penthouse	Three	Three	125.4	1350	Terrace

Two Bedrooms

Apartments: A14, A24, A34 & A44

Floors: 01, 02, 03 & 04

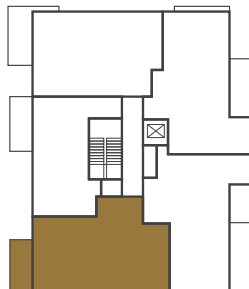
Total internal area
72.3 sq m / 778.2 sq ft



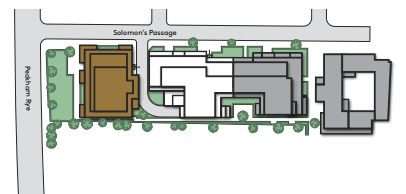
Room Dimensions

Living/Dining/Kitchen	7.41m x 3.12m	24' 4" x 10' 3"
Bedroom 1	3.78m x 3.81m	12' 5" x 12' 6"
Bedroom 2	5.3m x 2.74m	17' 5" x 8' 12"

Plot Locator (Floor 01)



Siteplan



◀▶ Measurement Points W Wardrobe

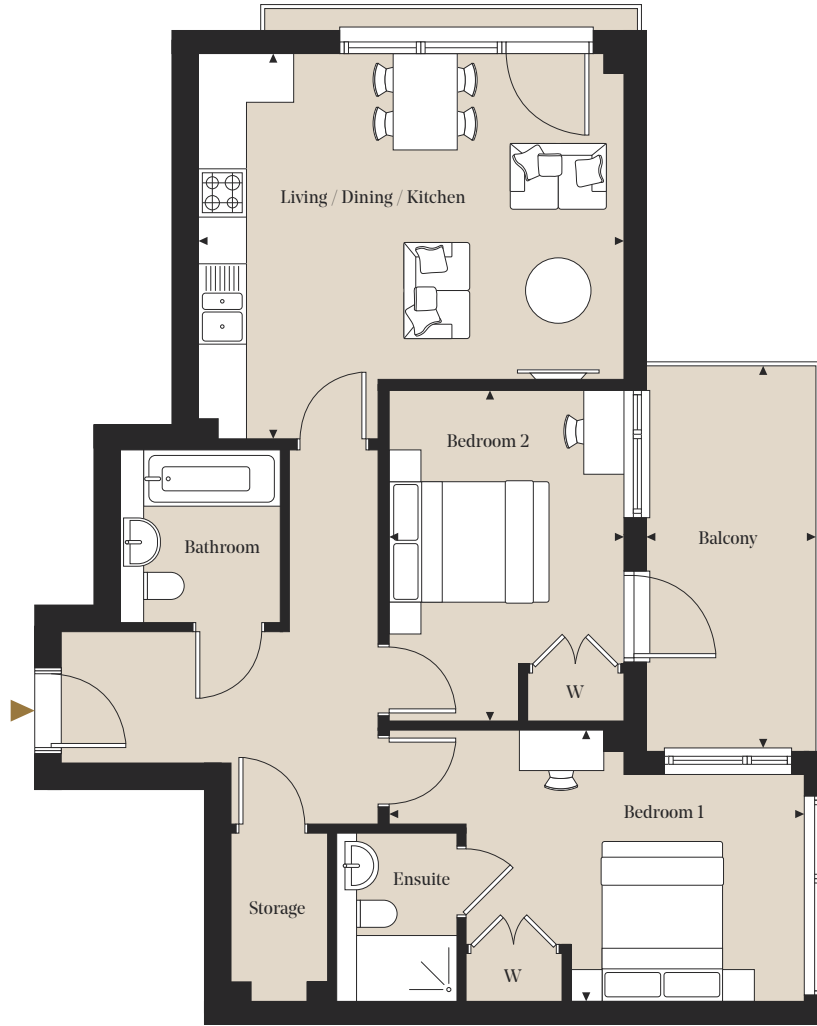
All measurements are approximate and are taken at maximum widths and lengths of rooms. Plans are drawn to scale at a design phase and may vary during build. Kitchens and wardrobes sizes and layouts may differ to those shown. Furniture layouts are indicative only (where they appear). All total sqft and sqm are gross measurements. Window styles and positions may vary. Floorplans are not to scale.

Two Bedrooms

Apartments: A12, A22, A32 & A42

Floors: 01, 02, 03 & 04

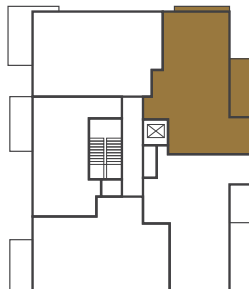
Total internal area
73.0 sq m / 786.3 sq ft



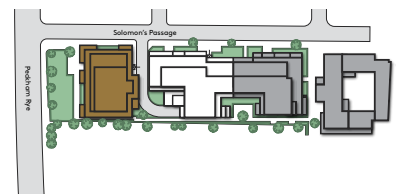
Room Dimensions

Living/Dining/Kitchen	5.31m x 4.82m	17' 5" x 15' 10"
Bedroom 1	5.18m x 3.38m	17' 0" x 11' 1"
Bedroom 2	2.93m x 4.11m	9' 7" x 13' 6"

Plot Locator (Floor 01)



Siteplan



◀▶ Measurement Points W Wardrobe

All measurements are approximate and are taken at maximum widths and lengths of rooms. Plans are drawn to scale at a design phase and may vary during build. Kitchens and wardrobes sizes and layouts may differ to those shown. Furniture layouts are indicative only (where they appear). All total sqft and sqm are gross measurements. Window styles and positions may vary. Floorplans are not to scale.

Two Bedrooms

Apartments: A13, A23, A33 & A43

Floors: 01, 02, 03 & 04

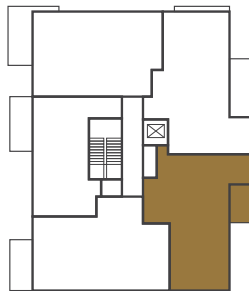
Total internal area
69.1 sq m / 743.7 sq ft



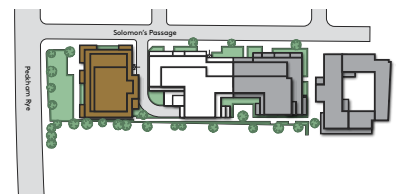
Room Dimensions

Living/Dining/Kitchen	7.01m x 7.54m	22' 12" x 24' 9"
Bedroom 1	4.76m x 3.55m	15' 7" x 11' 8"
Bedroom 2	3.59m x 2.75m	11' 10" x 9' 0"

Plot Locator (Floor 01)



Siteplan



◀▶ Measurement Points W Wardrobe

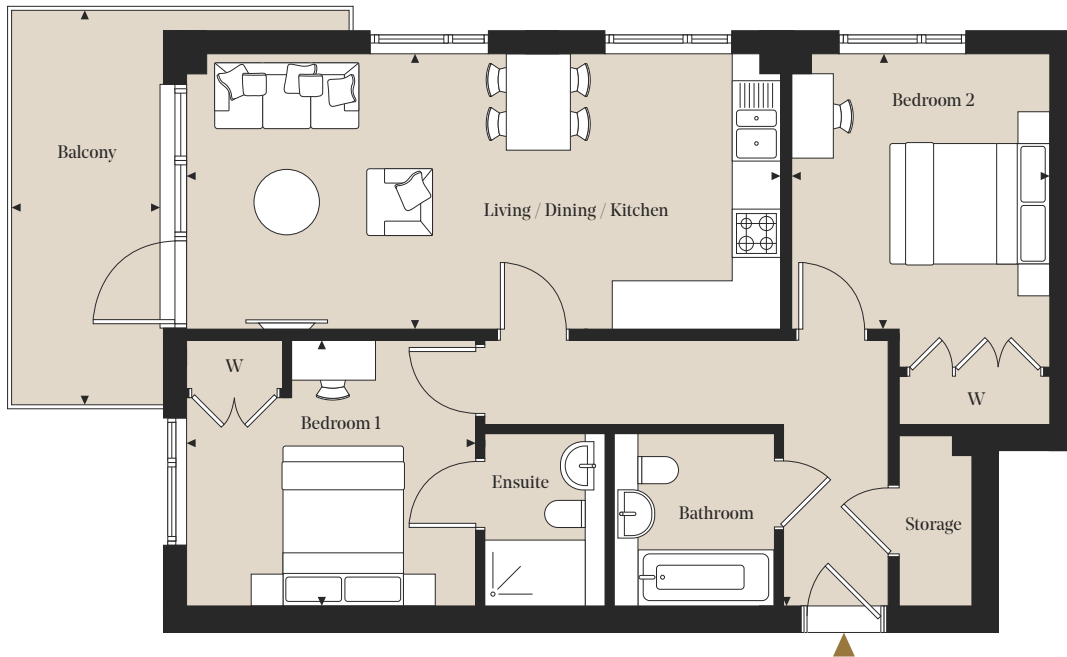
All measurements are approximate and are taken at maximum widths and lengths of rooms. Plans are drawn to scale at a design phase and may vary during build. Kitchens and wardrobes sizes and layouts may differ to those shown. Furniture layouts are indicative only (where they appear). All total sqft and sqm are gross measurements. Window styles and positions may vary. Floorplans are not to scale.

Two Bedrooms

Apartments: A11, A21, A31 & A41

Floors: 01, 02, 03 & 04

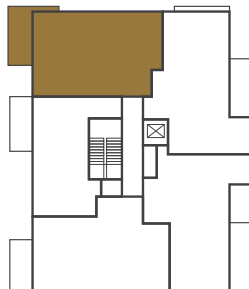
Total internal area
72.1 sq m / 776.4 sq ft



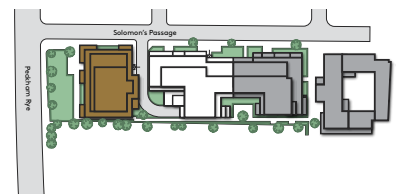
Room Dimensions

Living/Dining/Kitchen	7.41m x 3.44m	24' 4" x 11' 3"
Bedroom 1	3.61m x 3.32m	11' 10" x 10' 11"
Bedroom 2	3.23m x 4.63m	10' 7" x 15' 2"

Plot Locator (Floor 01)



Siteplan



◀▶ Measurement Points W Wardrobe

All measurements are approximate and are taken at maximum widths and lengths of rooms. Plans are drawn to scale at a design phase and may vary during build. Kitchens and wardrobes sizes and layouts may differ to those shown. Furniture layouts are indicative only (where they appear). All total sqft and sqm are gross measurements. Window styles and positions may vary. Floorplans are not to scale.

Floorplans

Block B

Apartments

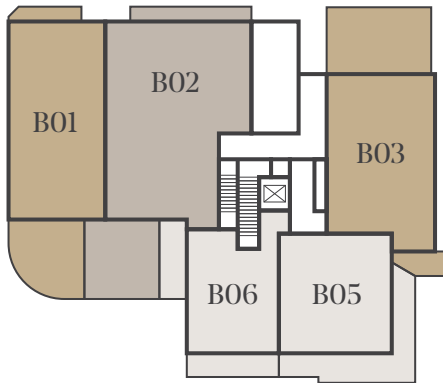
□ One Bedroom Apartments

■ Two Bedroom Apartments

■ Three Bedroom Apartments



Ground Floor



Floor 01



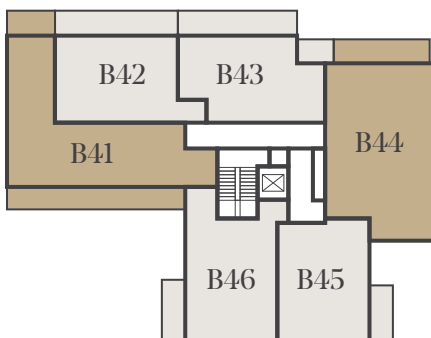
Floor 02



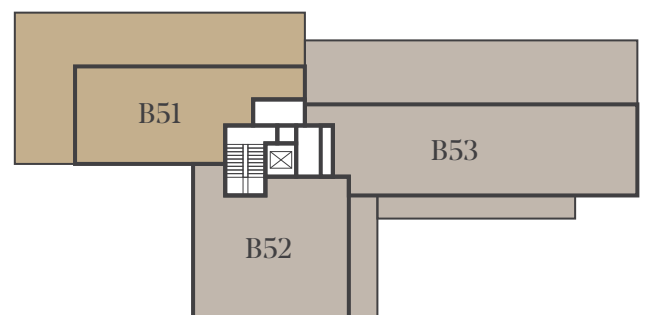
Floor 03



Floor 04



Penthouse



Two Bedrooms

Total internal area
83.0 sq m / 893.7 sq ft

Apartment: B03

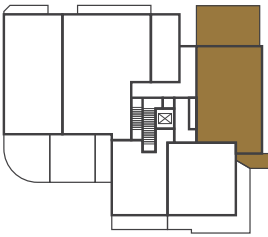
Floor: Ground



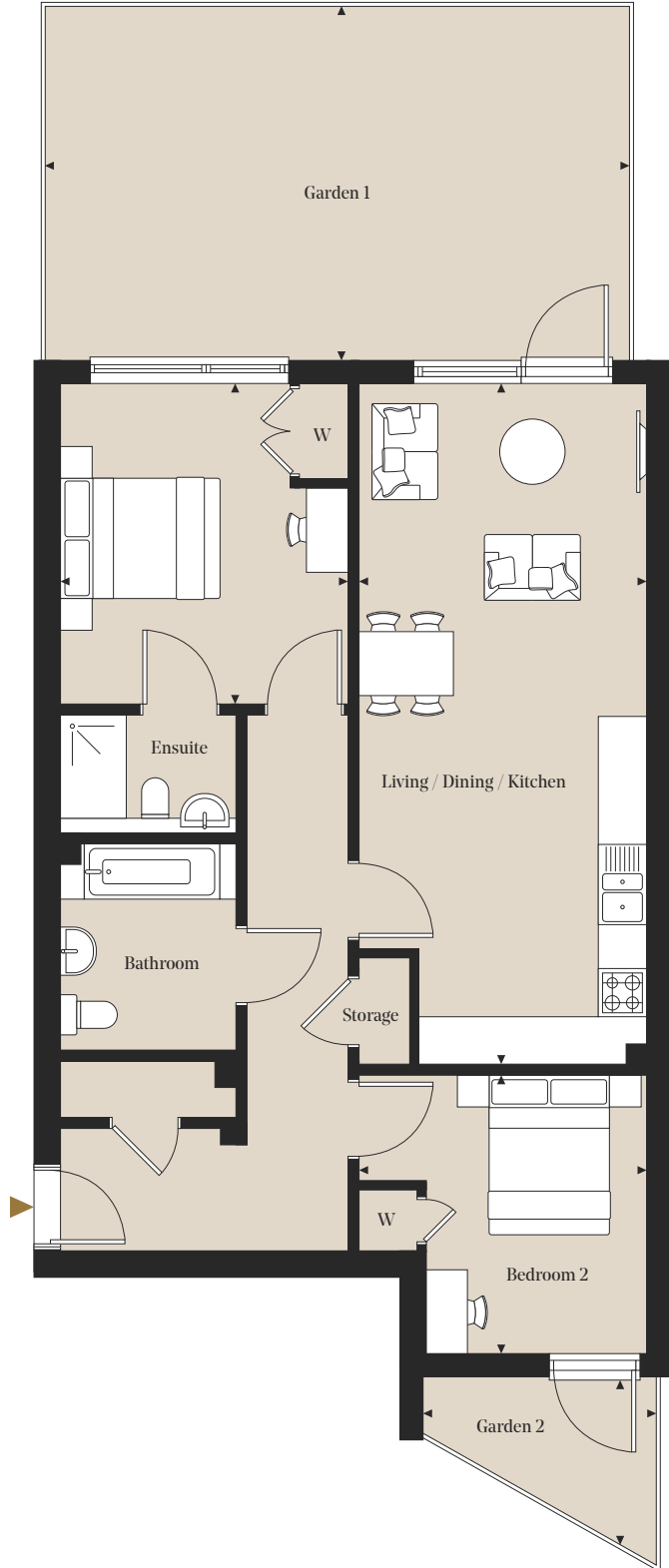
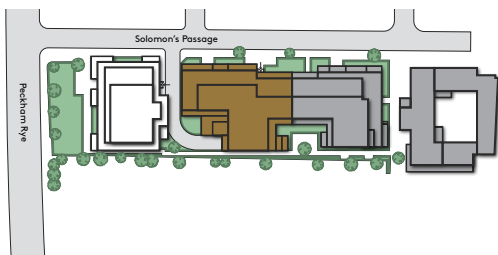
Room Dimensions

Bedroom 1	3.59m x 4.01m	11' 9" x 13' 2"
Bedroom 2	3.59m x 3.49m	11' 10" x 11' 5"
Living/Dining/Kitchen	3.59m x 8.51m	11' 10" x 27' 11"

Plot Locator (Floor Ground)



Siteplan



◀▶ Measurement Points W Wardrobe

All measurements are approximate and are taken at maximum widths and lengths of rooms. Plans are drawn to scale at a design phase and may vary during build. Kitchens and wardrobes sizes and layouts may differ to those shown. Furniture layouts are indicative only (where they appear). All total sqft and sqm are gross measurements. Window styles and positions may vary. Floorplans are not to scale.

Two Bedrooms

Apartment: B01

Floor: Ground

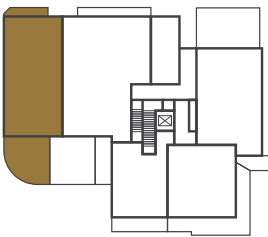
Total internal area
87.6 sq m / 942.9 sq ft



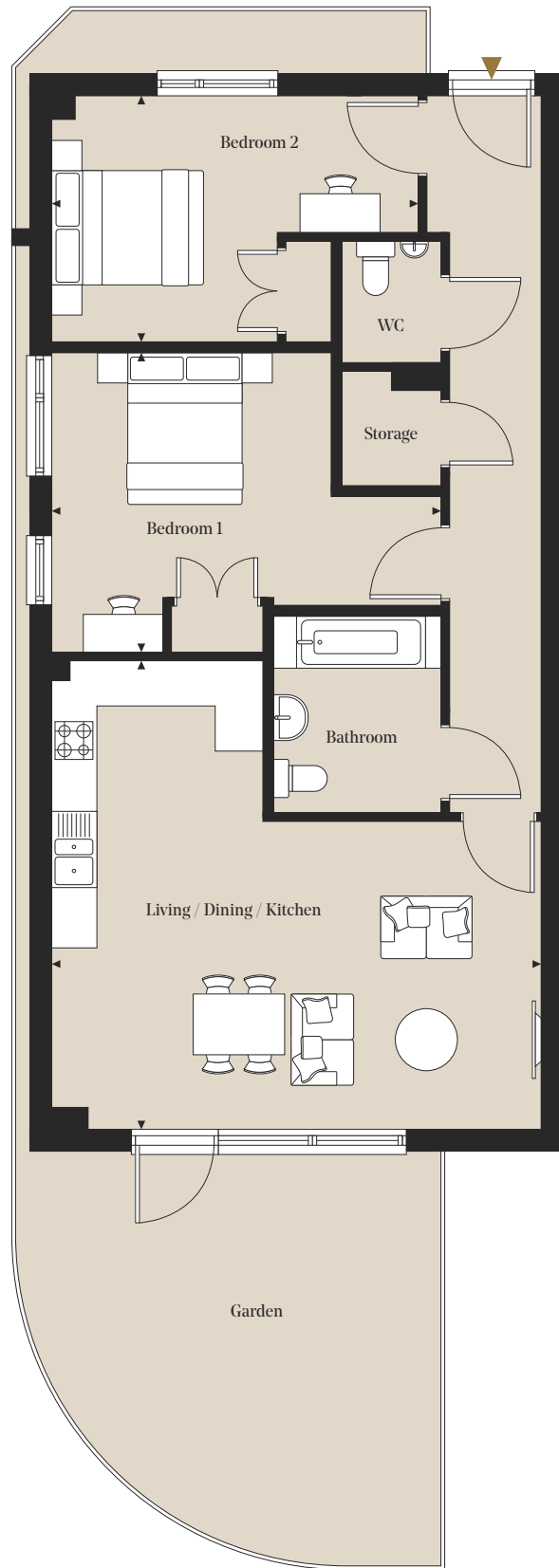
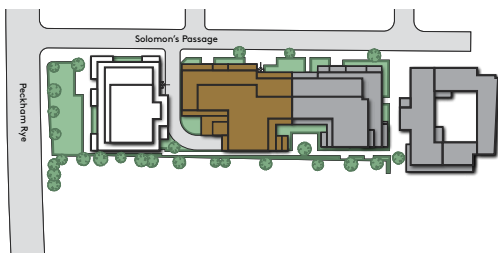
Room Dimensions

Living/Dining/Kitchen	6.44m x 6.17m	21' 2" x 20' 3"
Bedroom 1	5.12m x 3.94m	16' 10" x 12' 11"
Bedroom 2	4.82m x 3.24m	15' 10" x 10' 7"

Plot Locator (Ground floor)



Siteplan



◀▶ Measurement Points W Wardrobe

All measurements are approximate and are taken at maximum widths and lengths of rooms. Plans are drawn to scale at a design phase and may vary during build. Kitchens and wardrobes sizes and layouts may differ to those shown. Furniture layouts are indicative only (where they appear). All total sqft and sqm are gross measurements. Window styles and positions may vary. Floorplans are not to scale.

Two Bedrooms

Apartments: B13, B23, B34 & B44

Floors: 01, 02, 03 & 04

Total internal area
83.9 sq m / 902.7 sq ft



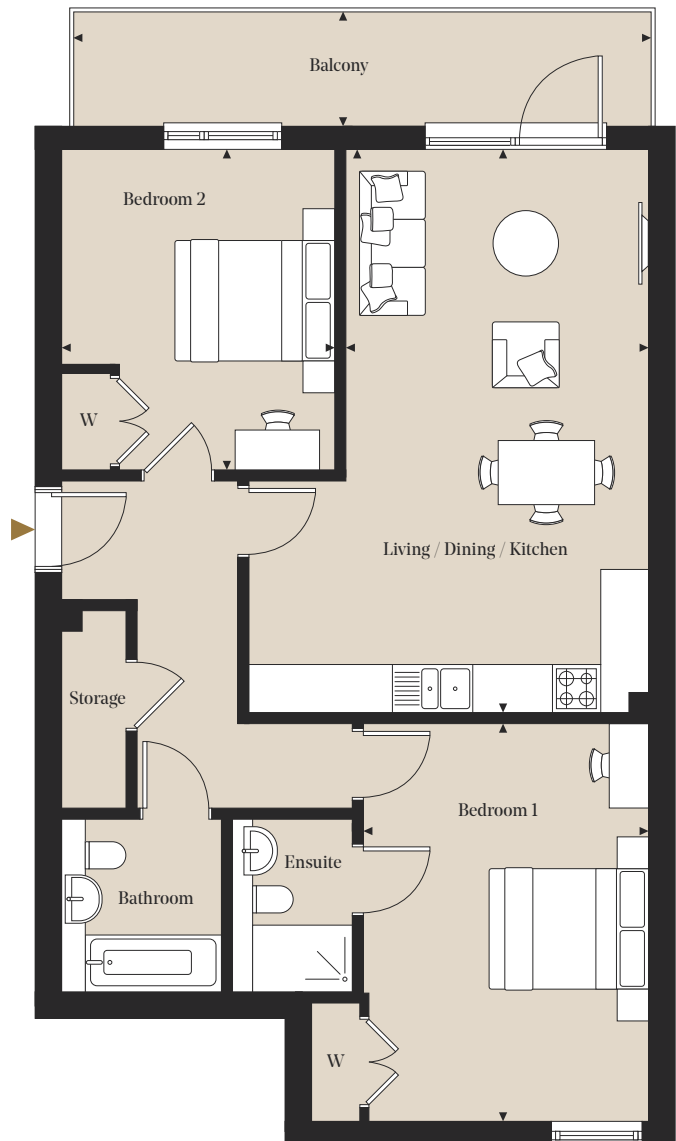
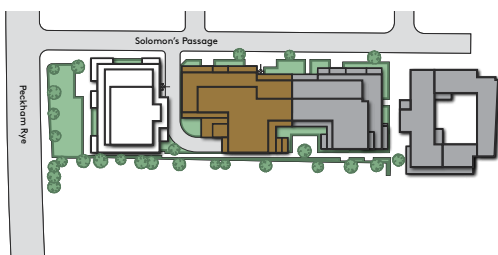
Room Dimensions

Living/Dining/Kitchen	4.99m x 7.04m	16' 5" x 23' 1"
Bedroom 1	4.21m x 4.96m	13' 10" x 16' 3"
Bedroom 2	3.40m x 4.01m	11' 2" x 13' 2"

Plot Locator (Floor 01)



Siteplan



◀▶ Measurement Points W Wardrobe

All measurements are approximate and are taken at maximum widths and lengths of rooms. Plans are drawn to scale at a design phase and may vary during build. Kitchens and wardrobes sizes and layouts may differ to those shown. Furniture layouts are indicative only (where they appear). All total sqft and sqm are gross measurements. Window styles and positions may vary. Floorplans are not to scale.

Two Bedrooms

Apartment: B41

Floor: 04

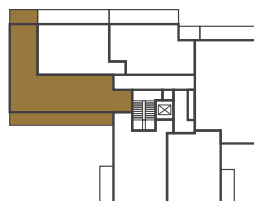
Total internal area
74.5 sq m / 802.4 sq ft



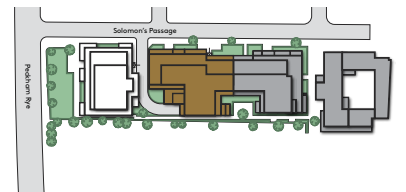
Room Dimensions

Living/Dining/Kitchen	6.89m x 7.94m	22' 7" x 26' 0"
Bedroom 1	4.47m x 2.99m	14' 8" x 9' 10"
Bedroom 2	4.05m x 2.99m	13' 3" x 9' 10"

Plot Locator (Floor 04)



Siteplan



◀▶ Measurement Points W Wardrobe

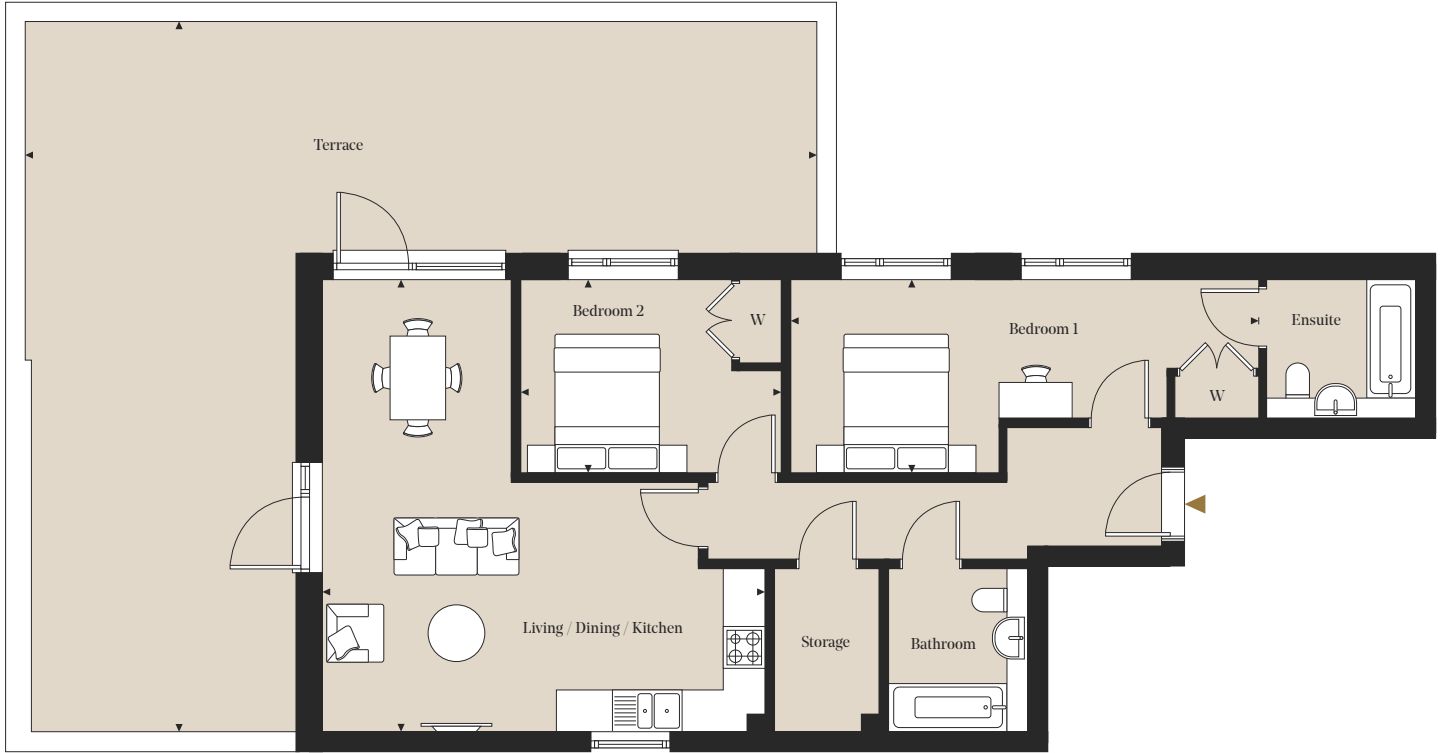
All measurements are approximate and are taken at maximum widths and lengths of rooms. Plans are drawn to scale at a design phase and may vary during build. Kitchens and wardrobes sizes and layouts may differ to those shown. Furniture layouts are indicative only (where they appear). All total sqft and sqm are gross measurements. Window styles and positions may vary. Floorplans are not to scale.

Two Bedrooms

Apartment: B51

Floor: 05

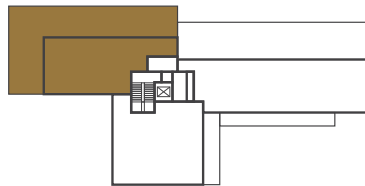
Total internal area
80.9 sq m / 870.7 sq ft



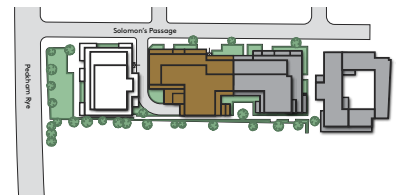
Room Dimensions

Living/Dining/Kitchen	6.37m x 6.52m	20' 11" x 21' 5"
Bedroom 1	6.73m x 2.79m	22' 1" x 9' 2"
Bedroom 2	3.75m x 2.79m	12' 4" x 9' 2"

Plot Locator (Floor 05)



Siteplan



◀▶ Measurement Points W Wardrobe

All measurements are approximate and are taken at maximum widths and lengths of rooms. Plans are drawn to scale at a design phase and may vary during build. Kitchens and wardrobes sizes and layouts may differ to those shown. Furniture layouts are indicative only (where they appear). All total sqft and sqm are gross measurements. Window styles and positions may vary. Floorplans are not to scale.



RYE-PARKSIDE.CO.UK