



RYE PARKSIDE

PECKHAM RYE

RYE-PARKSIDE.CO.UK



RYE PARKSIDE

Schedule of *accommodation*

Block A

| Plot | Floor | Beds | Baths | Size sqm | Size sqft | Ext Space |
|------|-----------|------|-------|----------|-----------|-----------|
| A03 | Ground | One | One | 65 | 700 | Terrace |
| A15 | First | One | One | 51.1 | 550 | Balcony |
| A25 | Second | One | One | 51.1 | 550 | Balcony |
| A35 | Third | One | One | 51.1 | 550 | Balcony |
| A45 | Fourth | One | One | 51.1 | 550 | Balcony |
| A51 | Penthouse | One | One | 52 | 560 | Terrace |
| A52 | Penthouse | One | One | 44.9 | 483 | Terrace |
| A53 | Penthouse | One | One | 52.3 | 563 | Terrace |
| A54 | Penthouse | One | One | 52.2 | 562 | Terrace |

| | | | | | | |
|-----|--------|-----|-----|------|-----|---------|
| A11 | First | Two | Two | 72.1 | 776 | Balcony |
| A12 | First | Two | Two | 73 | 786 | Balcony |
| A13 | First | Two | Two | 69.1 | 744 | Balcony |
| A14 | First | Two | Two | 72.3 | 778 | Balcony |
| A21 | Second | Two | Two | 72.1 | 776 | Balcony |
| A22 | Second | Two | Two | 73 | 786 | Balcony |
| A23 | Second | Two | Two | 69.1 | 744 | Balcony |
| A24 | Second | Two | Two | 72.3 | 778 | Balcony |
| A31 | Third | Two | Two | 72.1 | 776 | Balcony |
| A32 | Third | Two | Two | 73 | 786 | Balcony |
| A33 | Third | Two | Two | 69.1 | 744 | Balcony |
| A34 | Third | Two | Two | 72.3 | 778 | Balcony |
| A41 | Fourth | Two | Two | 72.1 | 776 | Balcony |
| A42 | Fourth | Two | Two | 73 | 786 | Balcony |
| A43 | Fourth | Two | Two | 69.1 | 744 | Balcony |
| A44 | Fourth | Two | Two | 72.3 | 778 | Balcony |

| | | | | | | |
|-----|--------|-------|-----|------|-------|---------|
| A01 | Ground | Three | Two | 95 | 1,023 | Terrace |
| A04 | Ground | Three | Two | 86.7 | 933 | Terrace |

Block B

| Plot | Floor | Beds | Baths | Size sqm | Size sqft | Ext Space |
|------|--------|------|-------|----------|-----------|-------------------|
| B05 | Ground | One | One | 61.1 | 658 | Garden |
| B06 | Ground | One | One | 51.2 | 551 | Garden & Balcony |
| B11 | First | One | One | 50.1 | 539 | Terrace |
| B12 | First | One | One | 50.2 | 540 | Balcony & Terrace |
| B14 | First | One | One | 60 | 646 | Balcony |
| B15 | First | One | One | 53.7 | 578 | Balcony |
| B21 | Second | One | One | 50.1 | 539 | Terrace |
| B22 | Second | One | One | 50.2 | 540 | Balcony & Terrace |
| B24 | Second | One | One | 60.1 | 647 | Balcony |
| B25 | Second | One | One | 53.7 | 578 | Balcony |
| B32 | Third | One | One | 50.1 | 539 | Terrace |
| B33 | Third | One | One | 50.2 | 540 | Balcony & Terrace |
| B35 | Third | One | One | 50.2 | 540 | Terrace |
| B36 | Third | One | One | 53.7 | 578 | Balcony |
| B42 | Fourth | One | One | 50 | 538 | Balcony |
| B43 | Fourth | One | One | 50.2 | 540 | Balcony x2 |
| B45 | Fourth | One | One | 50.2 | 540 | Balcony |
| B46 | Fourth | One | One | 58 | 624 | Balcony |

| | | | | | | |
|-----|-----------|-----|-----|------|-----|-------------------|
| B01 | Ground | Two | One | 87.6 | 943 | Garden |
| B03 | Ground | Two | Two | 83 | 893 | Garden |
| B13 | First | Two | Two | 83.9 | 903 | Balcony |
| B23 | Second | Two | Two | 83.9 | 903 | Balcony |
| B34 | Second | Two | Two | 83.9 | 903 | Balcony |
| B41 | Fourth | Two | Two | 74.5 | 802 | Balcony & Terrace |
| B44 | Fourth | Two | Two | 83.9 | 903 | Balcony |
| B51 | Penthouse | Two | Two | 80.9 | 871 | Terrace |

| | | | | | | |
|-----|-----------|-------|-------|-------|------|---------|
| B02 | Ground | Three | Two | 122.5 | 1319 | Terrace |
| B16 | First | Three | Two | 104.6 | 1126 | Terrace |
| B26 | Second | Three | Two | 104.6 | 1126 | Terrace |
| B31 | Third | Three | Two | 104.6 | 1126 | Terrace |
| B52 | Penthouse | Three | Two | 100.3 | 1080 | Terrace |
| B53 | Penthouse | Three | Three | 125.4 | 1350 | Terrace |

Floorplans

Block A

Apartments

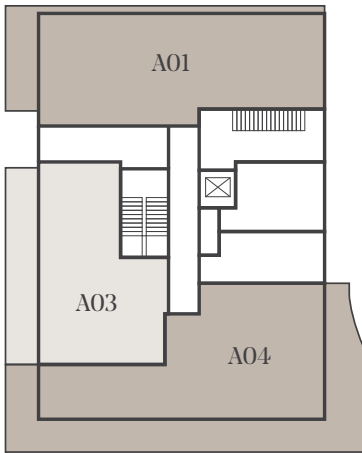
□ One Bedroom Apartments

■ Two Bedroom Apartments

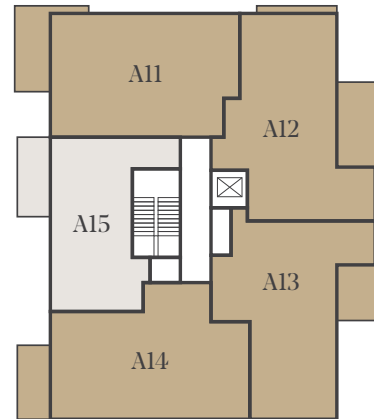
■ Three Bedroom Apartments



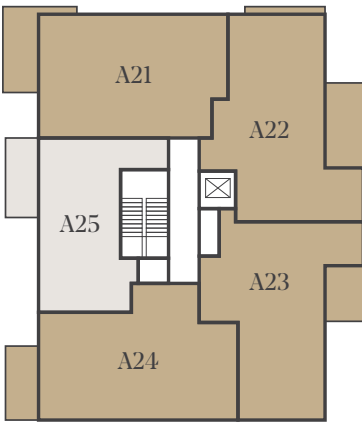
Ground Floor



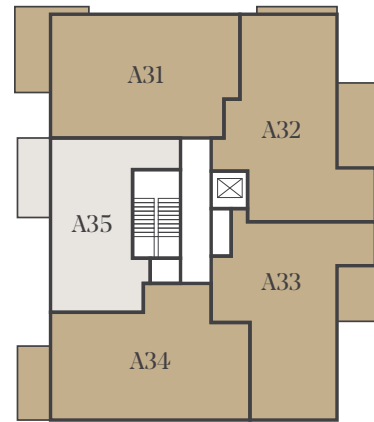
Floor 01



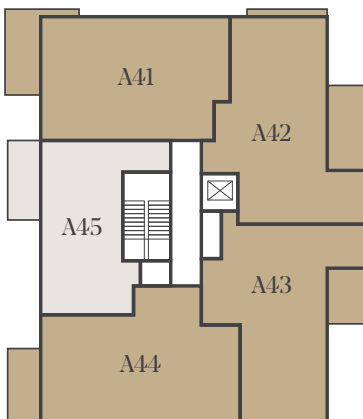
Floor 02



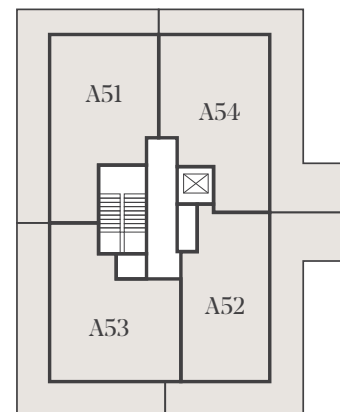
Floor 03



Floor 04



Penthouses

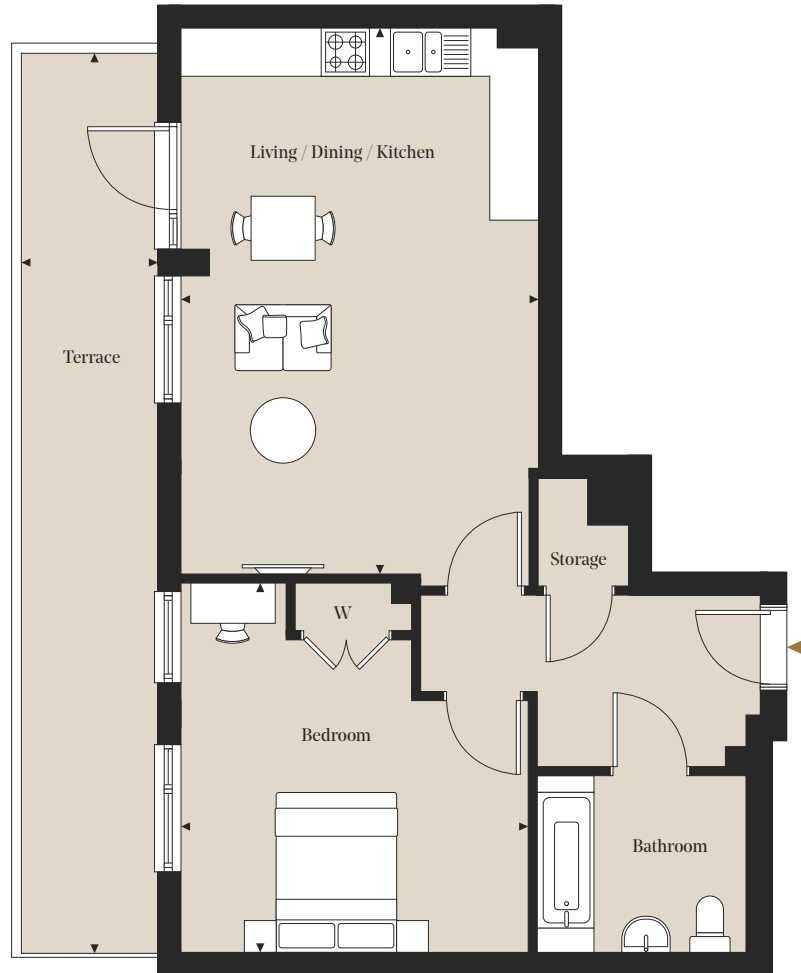


One Bedroom

Apartment: A03

Floor: Ground

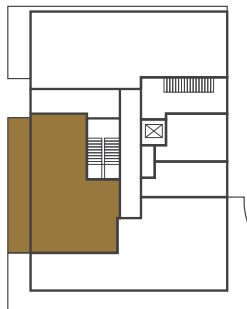
Total internal area
65.0 sq m / 699.4 sq ft



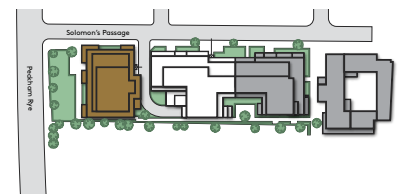
Room Dimensions

| | | |
|-----------------------|---------------|------------------|
| Living/Dining/Kitchen | 4.47m x 6.96m | 14' 8" x 22' 10" |
| Bedroom | 4.34m x 4.61m | 14' 3" x 15' 1" |

Plot Locator (Ground floor)



Siteplan



◀▶ Measurement Points W Wardrobe

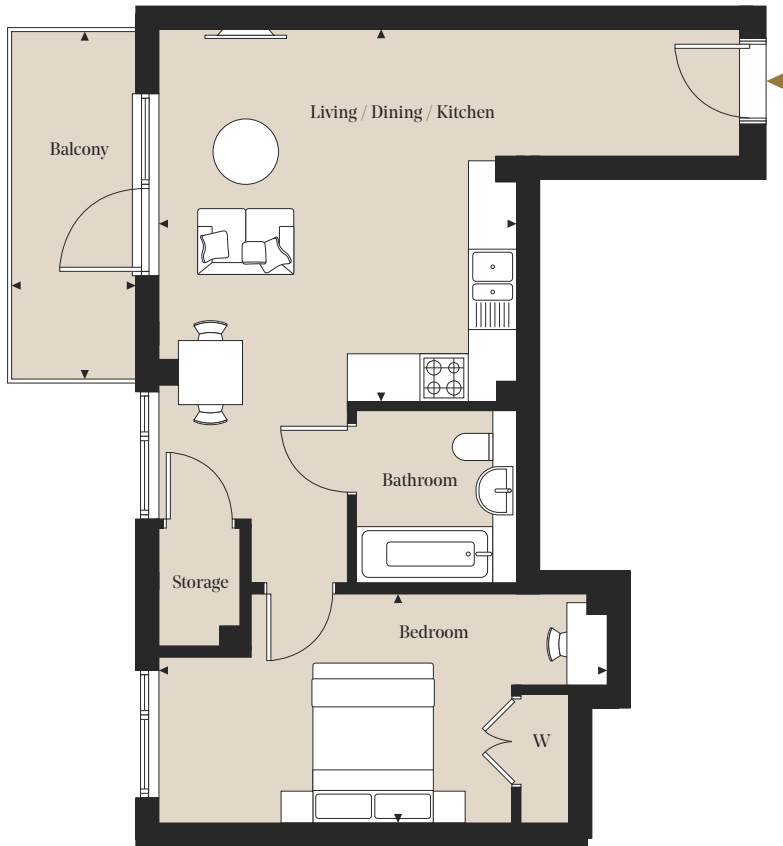
All measurements are approximate and are taken at maximum widths and lengths of rooms. Plans are drawn to scale at a design phase and may vary during build. Kitchens and wardrobes sizes and layouts may differ to those shown. Furniture layouts are indicative only (where they appear). All total sqft and sqm are gross measurements. Window styles and positions may vary. Floorplans are not to scale.

One Bedroom

Apartments: A15, A25, A35 & A45

Floors: 01, 02, 03 & 04

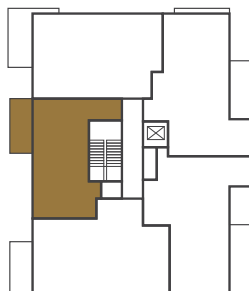
Total internal area
51.1 sq m / 550.1 sq ft



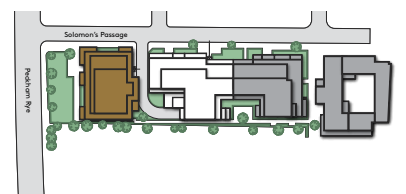
Room Dimensions

| | | |
|-----------------------|---------------|-----------------|
| Living/Dining/Kitchen | 7.24m x 6.92m | 23' 9" x 22' 8" |
| Bedroom | 5.59m x 2.86m | 18' 4" x 9' 4" |

Plot Locator (Floor 01)



Siteplan



◀▶ Measurement Points W Wardrobe

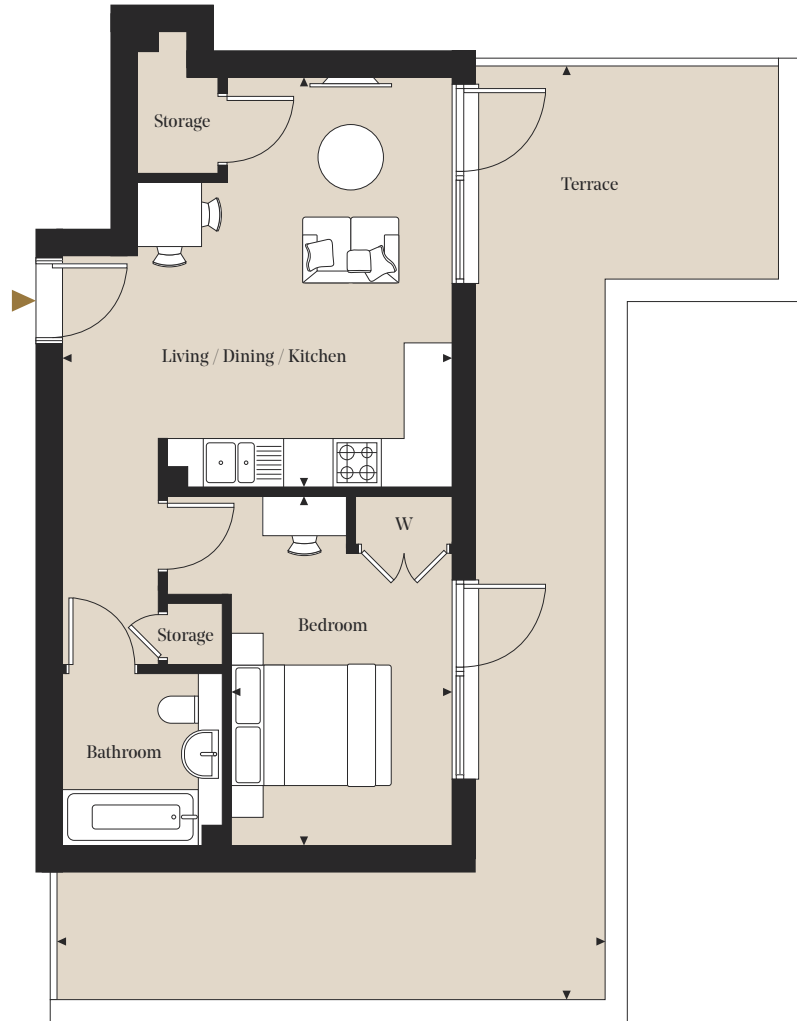
All measurements are approximate and are taken at maximum widths and lengths of rooms. Plans are drawn to scale at a design phase and may vary during build. Kitchens and wardrobes sizes and layouts may differ to those shown. Furniture layouts are indicative only (where they appear). All total sqft and sqm are gross measurements. Window styles and positions may vary. Floorplans are not to scale.

One Bedroom

Apartment: A52

Penthouse

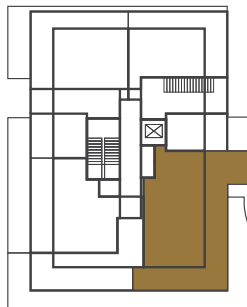
Total internal area
44.9 sq m / 483.5 sq ft



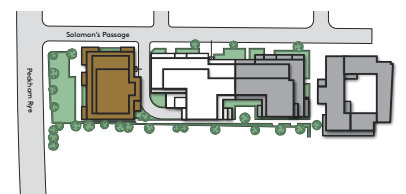
Room Dimensions

| | | |
|-----------------------|---------------|------------------|
| Living/Dining/Kitchen | 4.86m x 7.33m | 15' 12" x 24' 0" |
| Bedroom | 3.55m x 4.37m | 11' 8" x 14' 4" |

Plot Locator (Floor 05)



Siteplan



◀▶ Measurement Points W Wardrobe

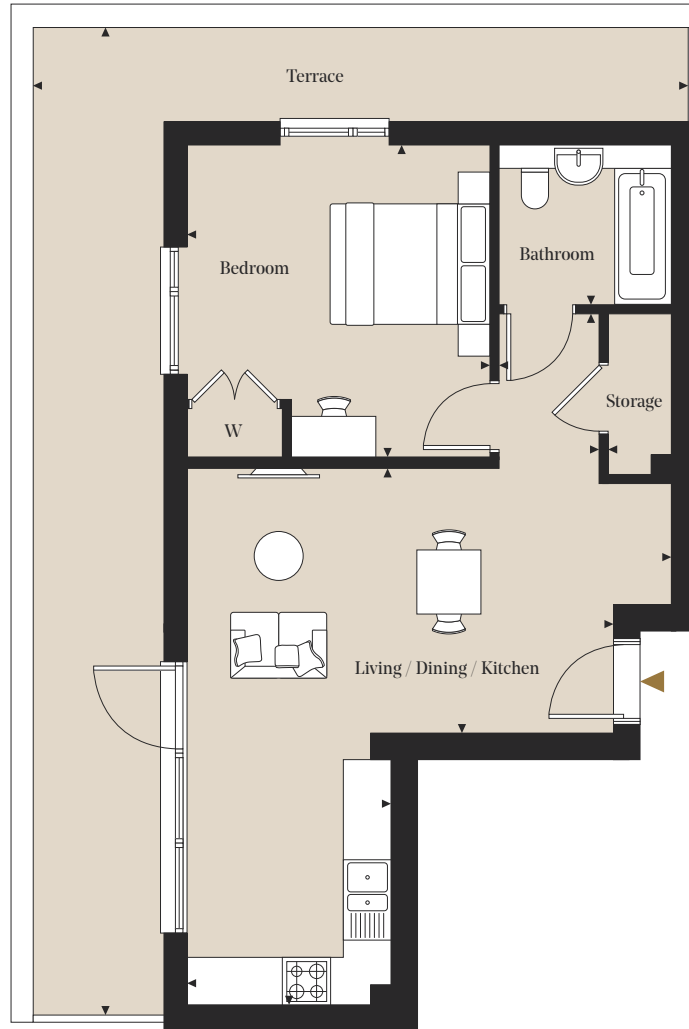
All measurements are approximate and are taken at maximum widths and lengths of rooms. Plans are drawn to scale at a design phase and may vary during build. Kitchens and wardrobes sizes and layouts may differ to those shown. Furniture layouts are indicative only (where they appear). All total sqft and sqm are gross measurements. Window styles and positions may vary. Floorplans are not to scale.

One Bedroom

Apartment: A51

Penthouse

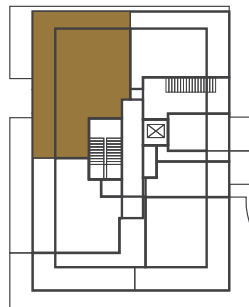
Total internal area
52.0 sq m / 559.5 sq ft



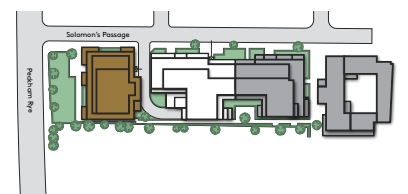
Room Dimensions

| | | |
|-----------------------|---------------|------------------|
| Living/Dining/Kitchen | 6.05m x 8.63m | 19' 10" x 28' 4" |
| Bedroom | 3.79m x 3.9m | 12' 5" x 12' 10" |

Plot Locator (Floor 05)



Siteplan



◀▶ Measurement Points W Wardrobe

All measurements are approximate and are taken at maximum widths and lengths of rooms. Plans are drawn to scale at a design phase and may vary during build. Kitchens and wardrobes sizes and layouts may differ to those shown. Furniture layouts are indicative only (where they appear). All total sqft and sqm are gross measurements. Window styles and positions may vary. Floorplans are not to scale.

One Bedroom

Apartment: A53

Penthouse

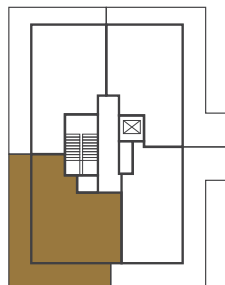
Total internal area
52.3 sq m / 563.1 sq ft



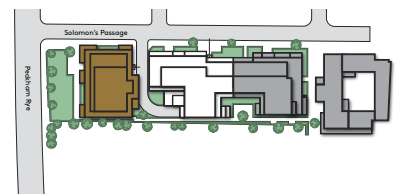
Room Dimensions

| | | |
|-----------------------|---------------|------------------|
| Living/Dining/Kitchen | 7.40m x 5.74m | 24' 3" x 18' 10" |
| Bedroom | 3.68m x 4.44m | 12' 1" x 14' 7" |

Plot Locator (Floor 05)



Siteplan



◀▶ Measurement Points W Wardrobe

All measurements are approximate and are taken at maximum widths and lengths of rooms. Plans are drawn to scale at a design phase and may vary during build. Kitchens and wardrobes sizes and layouts may differ to those shown. Furniture layouts are indicative only (where they appear). All total sqft and sqm are gross measurements. Window styles and positions may vary. Floorplans are not to scale.

One Bedroom

Apartment: A54

Penthouse

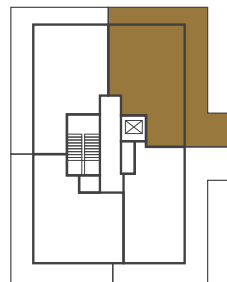
Total internal area
52.2 sq m / 562.1 sq ft



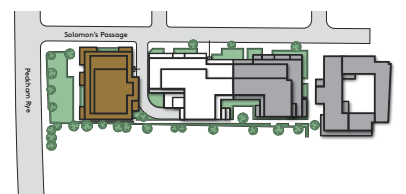
Room Dimensions

| | | |
|-----------------------|---------------|------------------|
| Living/Dining/Kitchen | 5.11m x 10.1m | 16' 9" x 33' 2" |
| Bedroom | 3.4m x 3.63m | 11' 2" x 11' 11" |

Plot Locator (Floor 05)



Siteplan



◀▶ Measurement Points W Wardrobe

All measurements are approximate and are taken at maximum widths and lengths of rooms. Plans are drawn to scale at a design phase and may vary during build. Kitchens and wardrobes sizes and layouts may differ to those shown. Furniture layouts are indicative only (where they appear). All total sqft and sqm are gross measurements. Window styles and positions may vary. Floorplans are not to scale.

Floorplans

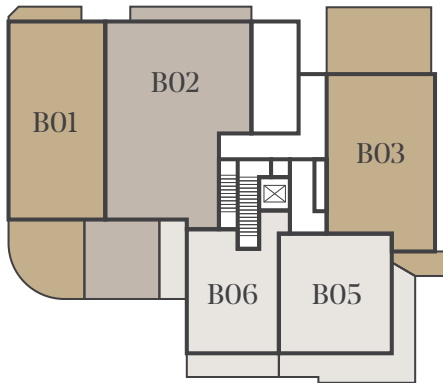
Block B

Apartments

- One Bedroom Apartments
- Two Bedroom Apartments
- Three Bedroom Apartments



Ground Floor



Floor 01



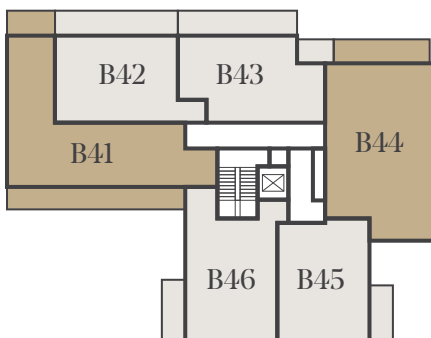
Floor 02



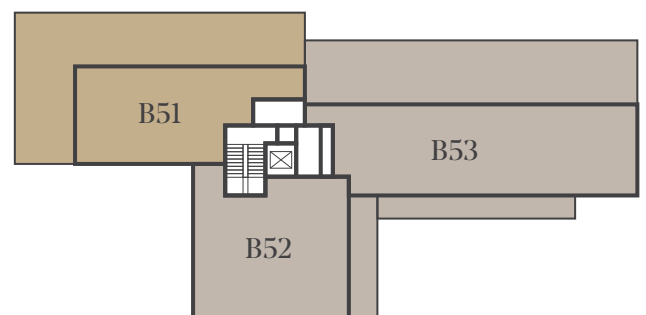
Floor 03



Floor 04



Penthouse

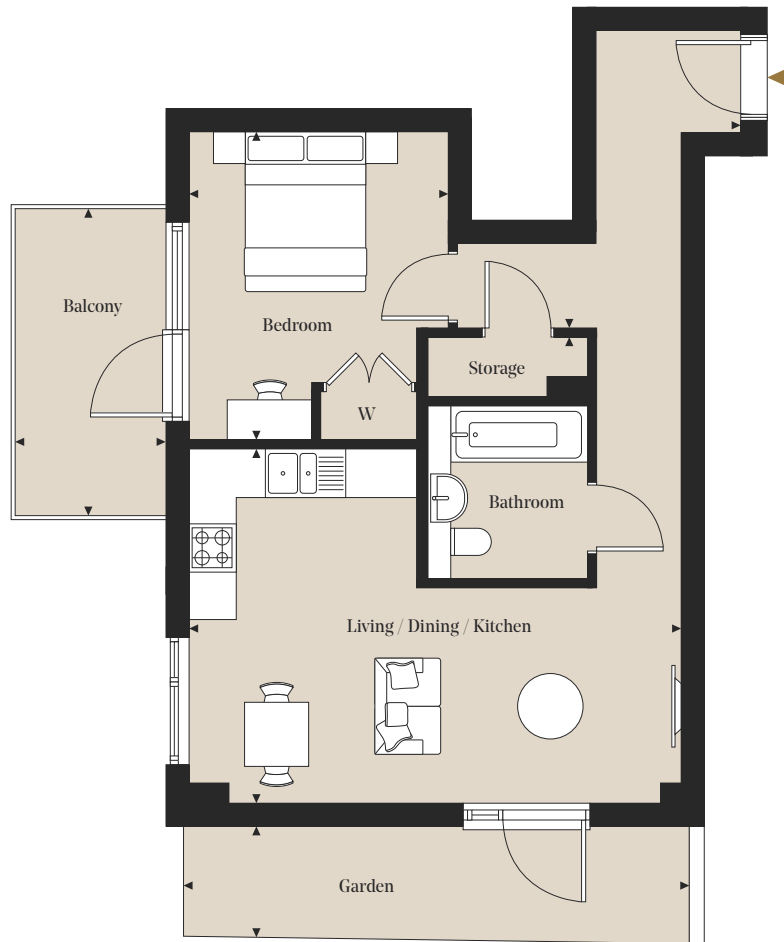


One Bedroom

Apartment: B06

Floor: Ground

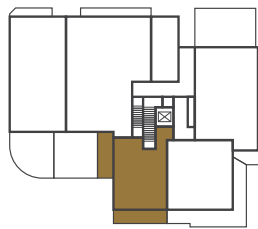
Total internal area
51.2 sq m / 551.2 sq ft



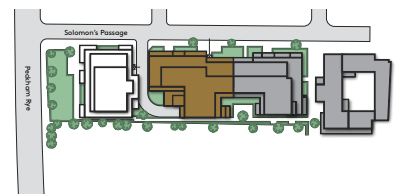
Room Dimensions

| | | |
|-----------------------|---------------|-----------------|
| Bedroom 1 | 3.24m x 3.85m | 10' 8" x 12' 8" |
| Living/Dining/Kitchen | 6.14m x 5.94m | 20' 2" x 19' 6" |

Plot Locator (Ground floor)



Siteplan



◀▶ Measurement Points W Wardrobe

All measurements are approximate and are taken at maximum widths and lengths of rooms. Plans are drawn to scale at a design phase and may vary during build. Kitchens and wardrobes sizes and layouts may differ to those shown. Furniture layouts are indicative only (where they appear). All total sqft and sqm are gross measurements. Window styles and positions may vary. Floorplans are not to scale.

One Bedroom

Apartment: B05

Floor: Ground

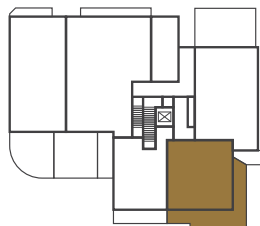
Total internal area
61.1 sq m / 657.2 sq ft



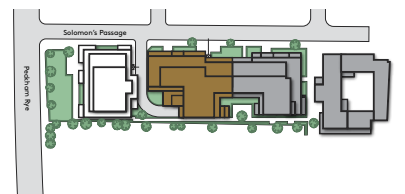
Room Dimensions

| | | |
|-----------------------|---------------|------------------|
| Living/Dining/Kitchen | 7.59m x 3.42m | 24' 11" x 11' 3" |
| Bedroom | 3.65m x 4.49m | 11' 12" x 14' 9" |

Plot Locator (Ground floor)



Siteplan



◀▶ Measurement Points W Wardrobe

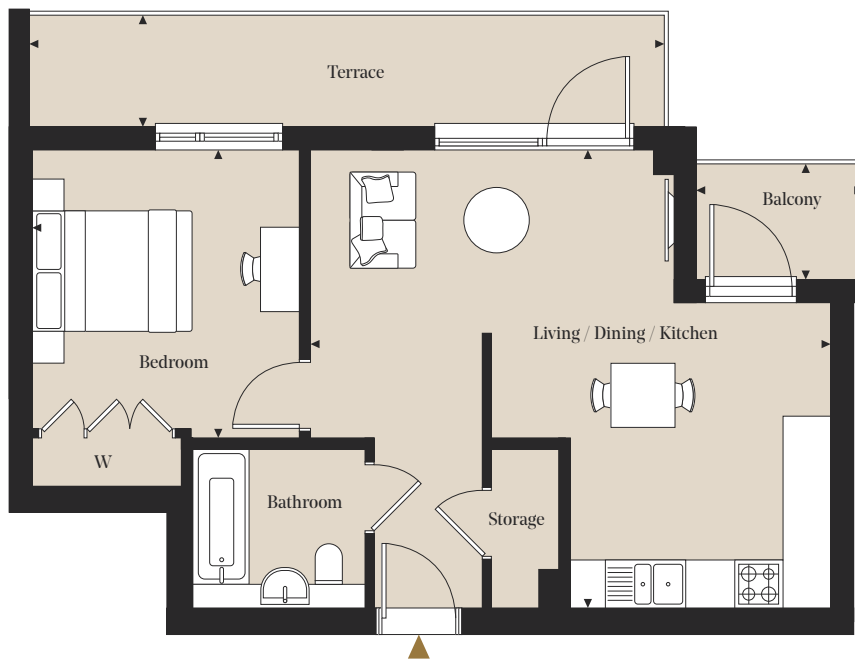
All measurements are approximate and are taken at maximum widths and lengths of rooms. Plans are drawn to scale at a design phase and may vary during build. Kitchens and wardrobes sizes and layouts may differ to those shown. Furniture layouts are indicative only (where they appear). All total sqft and sqm are gross measurements. Window styles and positions may vary. Floorplans are not to scale.

One Bedroom

Apartments: B12, B22 & B33

Floors: 01, 02 & 03

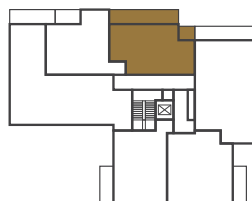
Total internal area
50.2 sq m / 540.6 sq ft



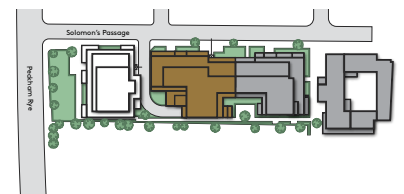
Room Dimensions

| | | |
|-----------------------|---------------|------------------|
| Living/Dining/Kitchen | 6.49m x 5.73m | 21' 3" x 18' 9" |
| Bedroom | 3.33m x 4.2m | 10' 11" x 13' 9" |

Plot Locator (Floor 01)



Siteplan



◀▶ Measurement Points W Wardrobe

All measurements are approximate and are taken at maximum widths and lengths of rooms. Plans are drawn to scale at a design phase and may vary during build. Kitchens and wardrobes sizes and layouts may differ to those shown. Furniture layouts are indicative only (where they appear). All total sqft and sqm are gross measurements. Window styles and positions may vary. Floorplans are not to scale.

One Bedroom

Apartments: B14 & B24

Floors: 01 & 02

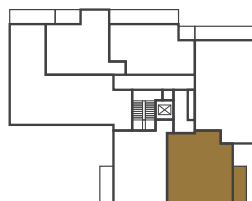
Total internal area
60.1 sq m / 647.1 sq ft



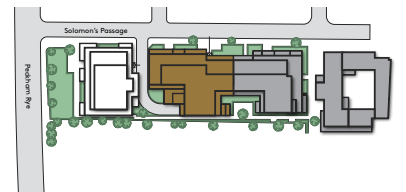
Room Dimensions

| | | |
|-----------------------|---------------|-------------------|
| Living/Dining/Kitchen | 7.59m x 4.25m | 24' 11" x 13' 11" |
| Bedroom | 4.25m x 3.99m | 13' 11" x 13' 1" |

Plot Locator (Floor 01)



Siteplan



◀▶ Measurement Points W Wardrobe

All measurements are approximate and are taken at maximum widths and lengths of rooms. Plans are drawn to scale at a design phase and may vary during build. Kitchens and wardrobes sizes and layouts may differ to those shown. Furniture layouts are indicative only (where they appear). All total sqft and sqm are gross measurements. Window styles and positions may vary. Floorplans are not to scale.

One Bedroom

Apartment: B11, B21 & B32

Floors: 01, 02 & 03

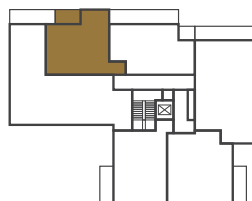
Total internal area
50.1 sq m / 539.3 sq ft



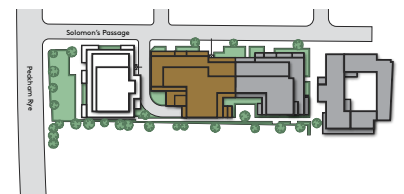
Room Dimensions

| | | |
|-----------------------|---------------|-------------------|
| Living/Dining/Kitchen | 5.04m x 7.53m | 16' 7" x 24' 8" |
| Bedroom | 3.34m x 3.6m | 10' 11" x 11' 10" |

Plot Locator (Floor 01)



Siteplan



◀▶ Measurement Points W Wardrobe

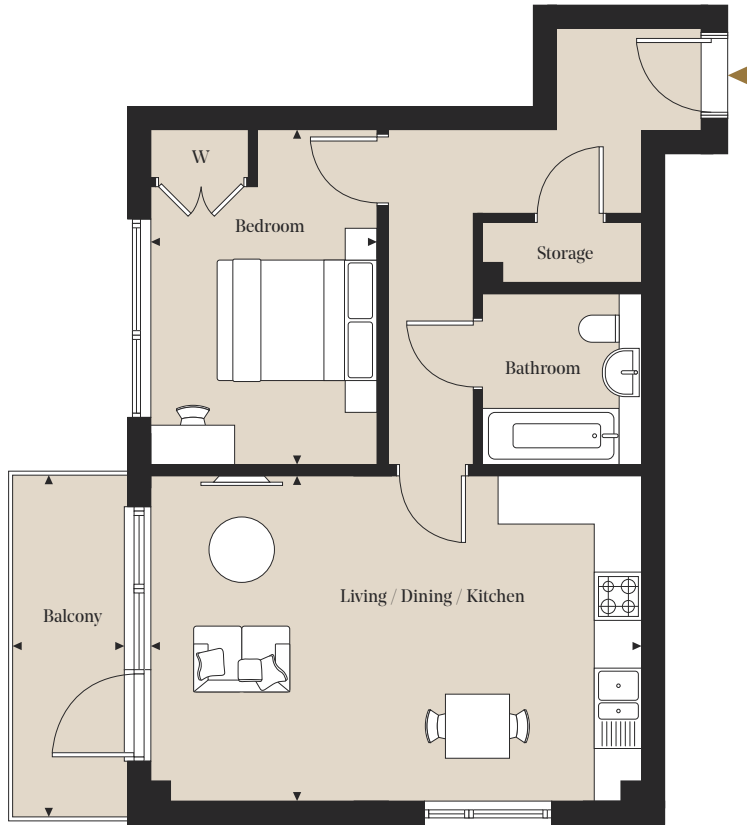
All measurements are approximate and are taken at maximum widths and lengths of rooms. Plans are drawn to scale at a design phase and may vary during build. Kitchens and wardrobes sizes and layouts may differ to those shown. Furniture layouts are indicative only (where they appear). All total sqft and sqm are gross measurements. Window styles and positions may vary. Floorplans are not to scale.

One Bedroom

Apartments: B15, B25 & B36

Floors: 01, 02 & 03

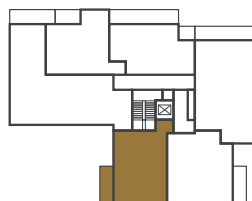
Total internal area
53.7 sq m / 578.5 sq ft



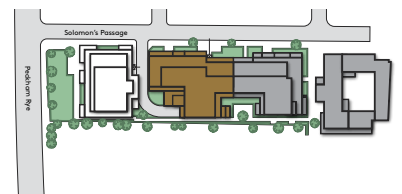
Room Dimensions

| | | |
|-----------------------|---------------|-----------------|
| Living/Dining/Kitchen | 6.14m x 4.05m | 20' 2" x 13' 4" |
| Bedroom | 2.84m x 4.18m | 9' 4" x 13' 9" |

Plot Locator (Floor 01)



Siteplan



◀▶ Measurement Points W Wardrobe

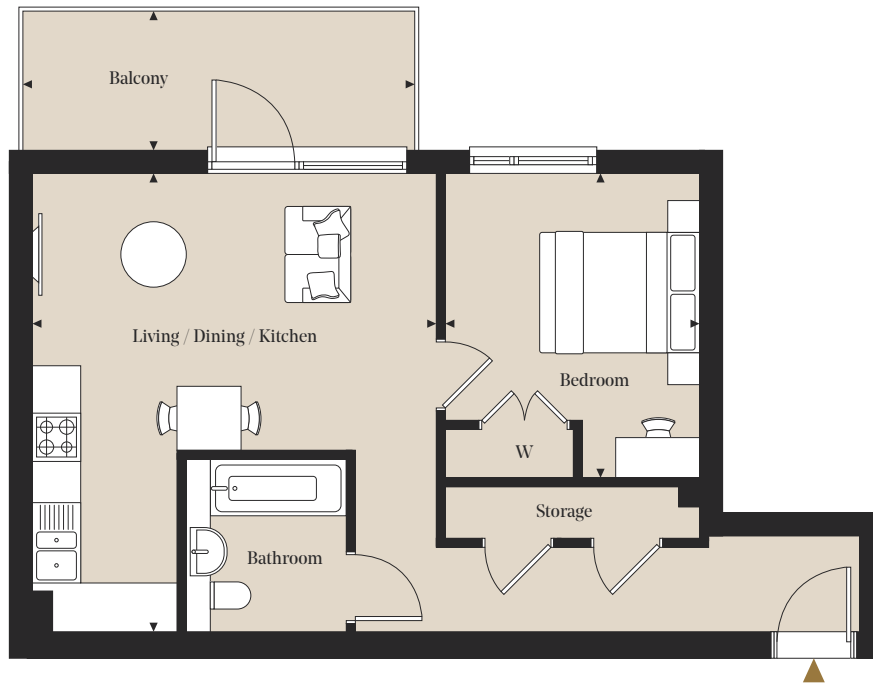
All measurements are approximate and are taken at maximum widths and lengths of rooms. Plans are drawn to scale at a design phase and may vary during build. Kitchens and wardrobes sizes and layouts may differ to those shown. Furniture layouts are indicative only (where they appear). All total sqft and sqm are gross measurements. Window styles and positions may vary. Floorplans are not to scale.

One Bedroom

Apartment: B42

Floor: 04

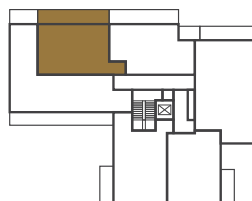
Total internal area
50.0 sq m / 538.5 sq ft



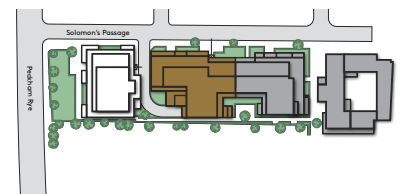
Room Dimensions

| | | |
|-----------------------|---------------|-----------------|
| Living/Dining/Kitchen | 5.03m x 5.73m | 16' 6" x 18' 9" |
| Bedroom | 3.17m x 3.8m | 10' 5" x 12' 6" |

Plot Locator (Floor 04)



Siteplan



◀▶ Measurement Points W Wardrobe

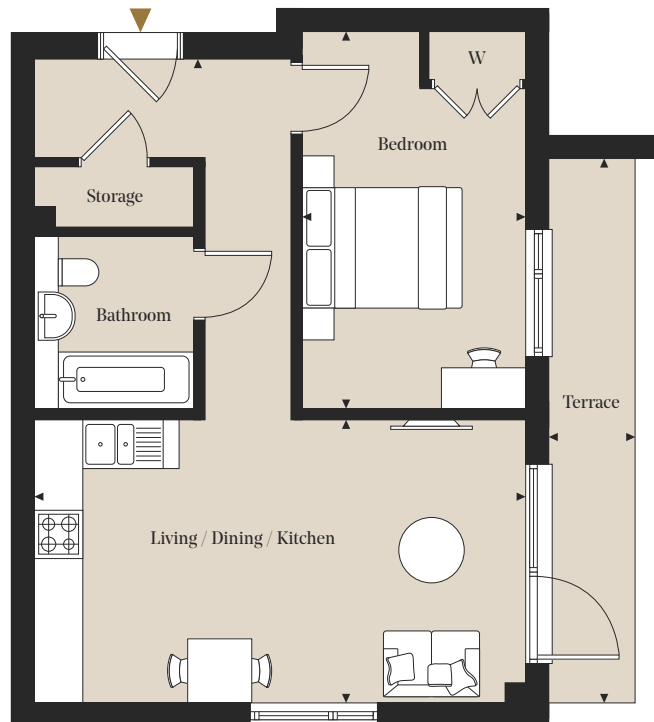
All measurements are approximate and are taken at maximum widths and lengths of rooms. Plans are drawn to scale at a design phase and may vary during build. Kitchens and wardrobes sizes and layouts may differ to those shown. Furniture layouts are indicative only (where they appear). All total sqft and sqm are gross measurements. Window styles and positions may vary. Floorplans are not to scale.

One Bedroom

Apartment: B35

Floor: 03

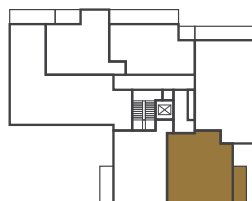
Total internal area
50.2 sq m / 540.3 sq ft



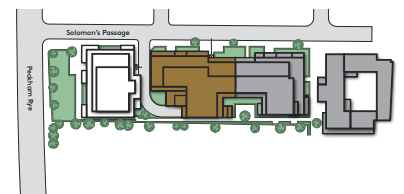
Room Dimensions

| | | |
|-----------------------|---------------|-----------------|
| Living/Dining/Kitchen | 6.13m x 6.81m | 20' 1" x 22' 4" |
| Bedroom | 2.79m x 4.72m | 9' 2" x 15' 6" |

Plot Locator (Floor 03)



Siteplan



◀▶ Measurement Points W Wardrobe

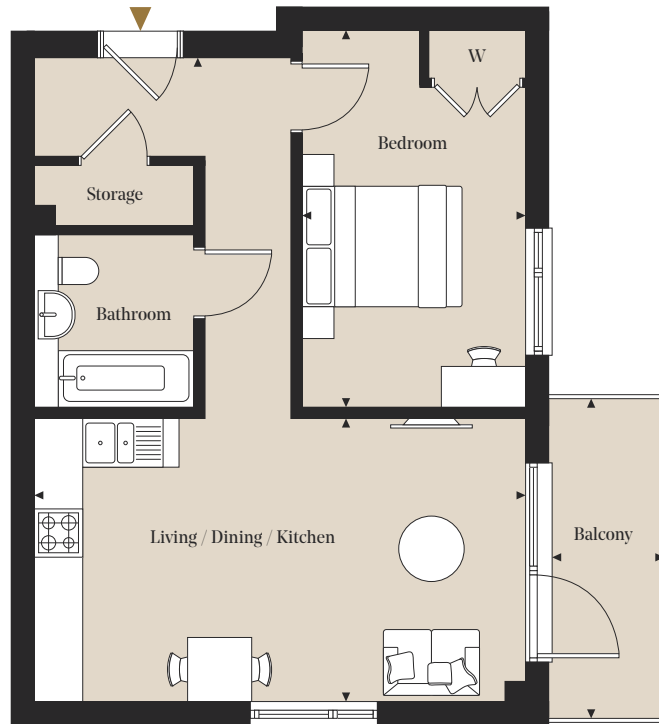
All measurements are approximate and are taken at maximum widths and lengths of rooms. Plans are drawn to scale at a design phase and may vary during build. Kitchens and wardrobes sizes and layouts may differ to those shown. Furniture layouts are indicative only (where they appear). All total sqft and sqm are gross measurements. Window styles and positions may vary. Floorplans are not to scale.

One Bedroom

Apartment: B45

Floor: 04

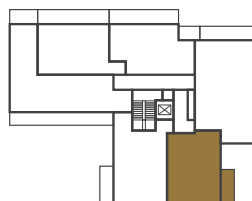
Total internal area
50.2 sq m / 540.3 sq ft



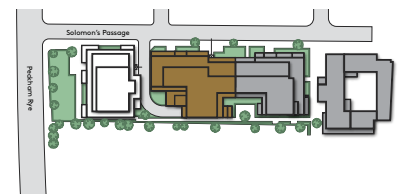
Room Dimensions

| | | |
|-----------------------|---------------|-----------------|
| Living/Dining/Kitchen | 6.13m x 6.81m | 20' 1" x 22' 4" |
| Bedroom | 2.79m x 4.72m | 9' 2" x 15' 6" |

Plot Locator (Floor 04)



Siteplan



◀▶ Measurement Points W Wardrobe

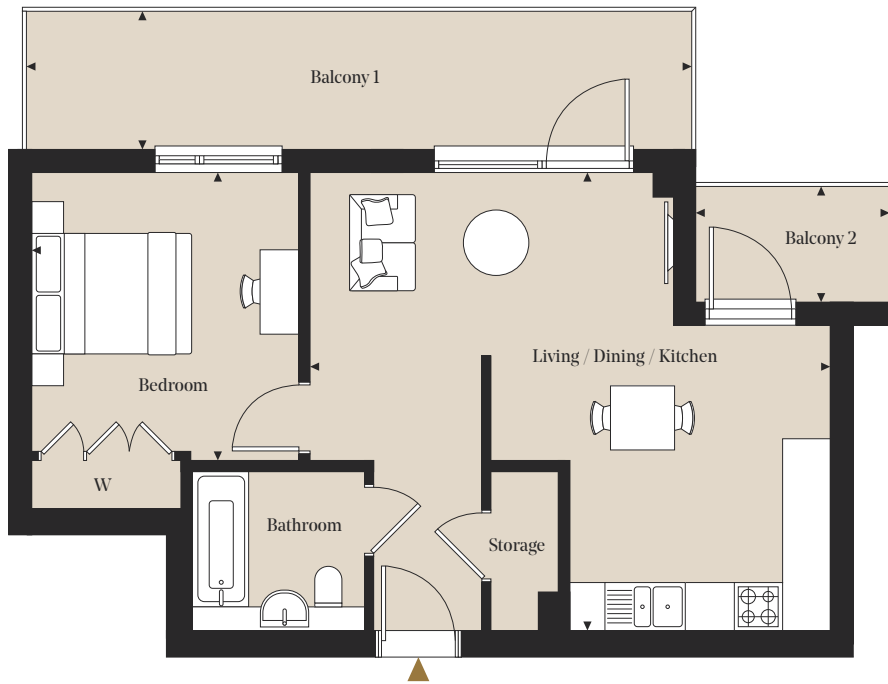
All measurements are approximate and are taken at maximum widths and lengths of rooms. Plans are drawn to scale at a design phase and may vary during build. Kitchens and wardrobes sizes and layouts may differ to those shown. Furniture layouts are indicative only (where they appear). All total sqft and sqm are gross measurements. Window styles and positions may vary. Floorplans are not to scale.

One Bedroom

Apartment: B43

Floor: 04

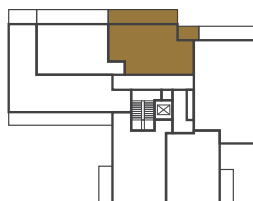
Total internal area
50.2 sq m / 540.6 sq ft



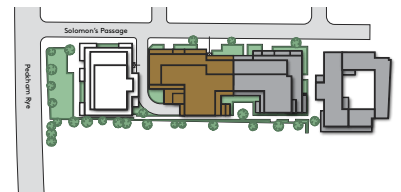
Room Dimensions

| | | |
|-----------------------|---------------|------------------|
| Living/Dining/Kitchen | 6.49m x 5.73m | 21' 3" x 18' 9" |
| Bedroom | 3.33m x 4.20m | 10' 11" x 13' 9" |

Plot Locator (Floor 04)



Siteplan



◀▶ Measurement Points W Wardrobe

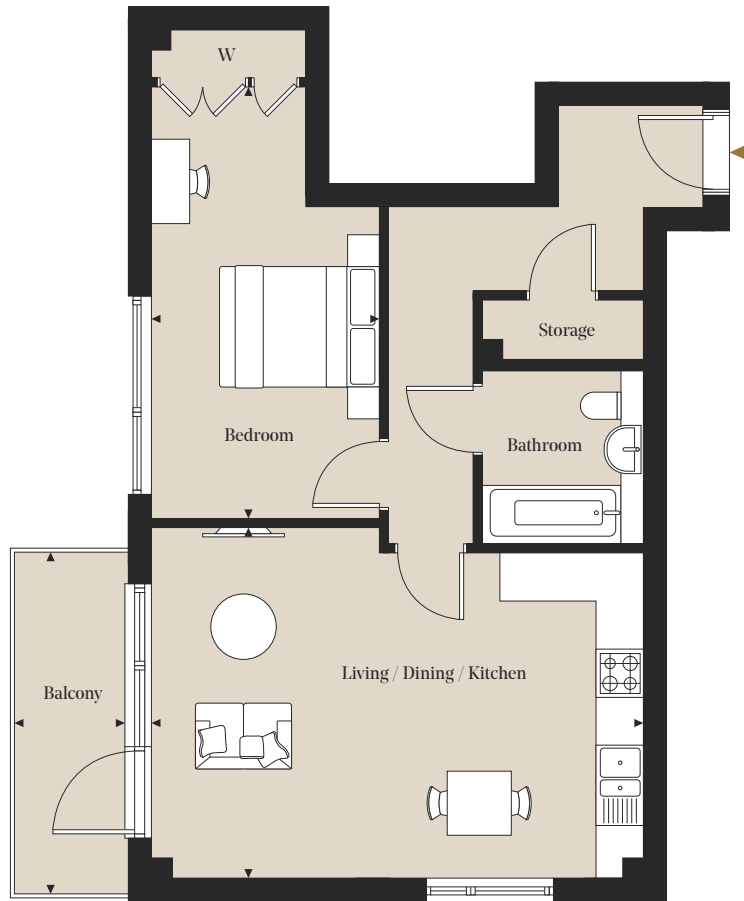
All measurements are approximate and are taken at maximum widths and lengths of rooms. Plans are drawn to scale at a design phase and may vary during build. Kitchens and wardrobes sizes and layouts may differ to those shown. Furniture layouts are indicative only (where they appear). All total sqft and sqm are gross measurements. Window styles and positions may vary. Floorplans are not to scale.

One Bedroom

Apartment: B46

Floor: 04

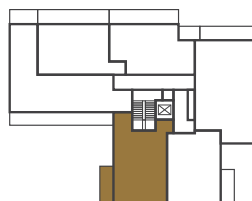
Total internal area
58.0 sq m / 624.7 sq ft



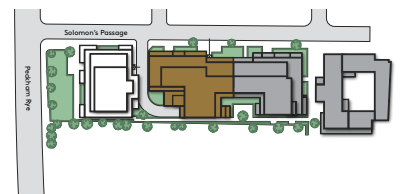
Room Dimensions

| | | |
|-----------------------|---------------|-----------------|
| Living/Dining/Kitchen | 6.14m x 4.37m | 20' 2" x 14' 4" |
| Bedroom | 2.86m x 6.10m | 9' 5" x 20' 0" |

Plot Locator (Floor 04)



Siteplan



◀▶ Measurement Points W Wardrobe

All measurements are approximate and are taken at maximum widths and lengths of rooms. Plans are drawn to scale at a design phase and may vary during build. Kitchens and wardrobes sizes and layouts may differ to those shown. Furniture layouts are indicative only (where they appear). All total sqft and sqm are gross measurements. Window styles and positions may vary. Floorplans are not to scale.

